

# Avardia

6 LLEWELLYN COURT, LUCAS  
LAND SIZE: 560m2 approx



 MCMASTER

house+land  
COMPLETE

🛏️ 4 🛋️ 2 🚗 2

**HOUSE & INCLUSIONS:** \$1,100,000



### **Inclusion Highlights**

Stunning Hamptons Facade  
Double Glazing  
Luxury Belling Richmond Cooker  
Soaring Ceilings  
High-end Cabinetry Fitout  
Refrigerated split system cooling  
Meticulously Landscaped

Premium Floor Coverings  
Gas Log Fire  
Luxury Window Treatments  
Automatic garage door  
Gas ducted heating  
Prestige Stone Surfaces



*Witness to truly understand the meticulous attention to detail and top-tier finishes.*

This fusion of classic and contemporary elements crafts a welcoming retreat.

Positioned in a prime location and landscaped with unwavering dedication. With soaring ceilings, premium stone benchtops, a prestigious Belling Richmond cooker, and luxurious window treatments including plantation shutters, blackout, and sheer curtains. The list goes on...

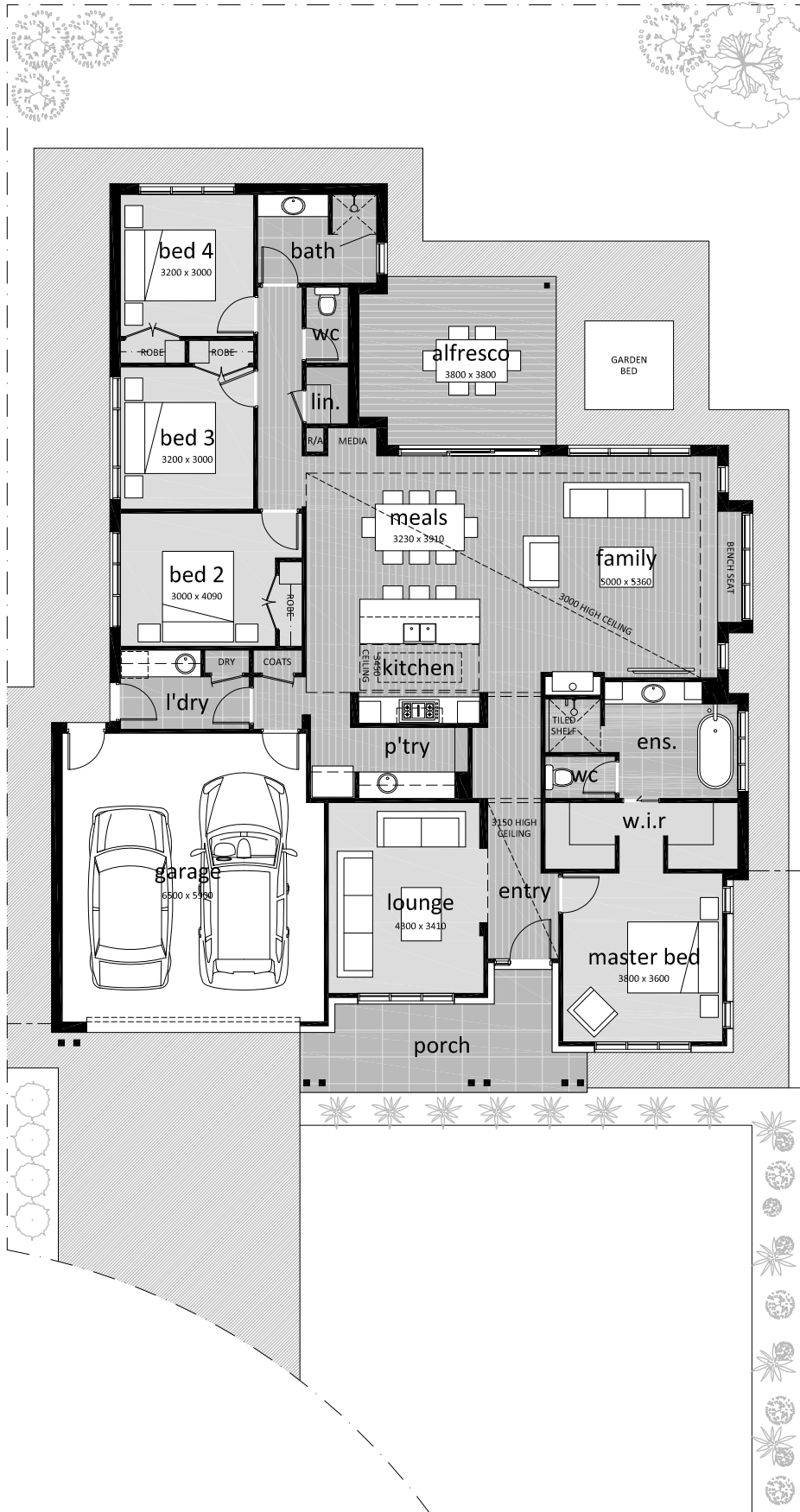
McMaster Homes prioritises the use of local tradespeople and high-quality materials to construct homes that inspire and provide exceptional lifestyle opportunities.

Our team of designers and builders work tirelessly to create homes that are both innovative and stylish with superior finishes and exceptional value.









TOTAL RESIDENCE FLOOR AREA = 188.99m<sup>2</sup> 20.34sq  
 TOTAL GARAGE FLOOR AREA (NOT INC. PIERS) = 41.07m<sup>2</sup> 4.42sq  
 ALFRESCO AREA = 16.21m<sup>2</sup> 1.74sq

Not to scale