

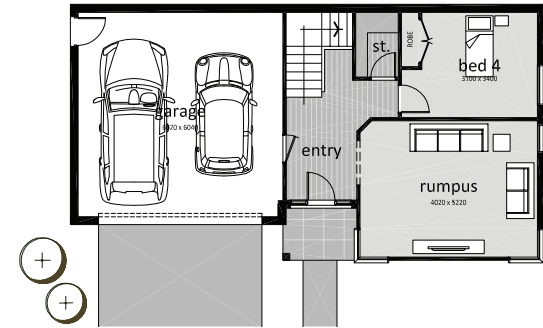


# Strata30 Up Slope / Top Living

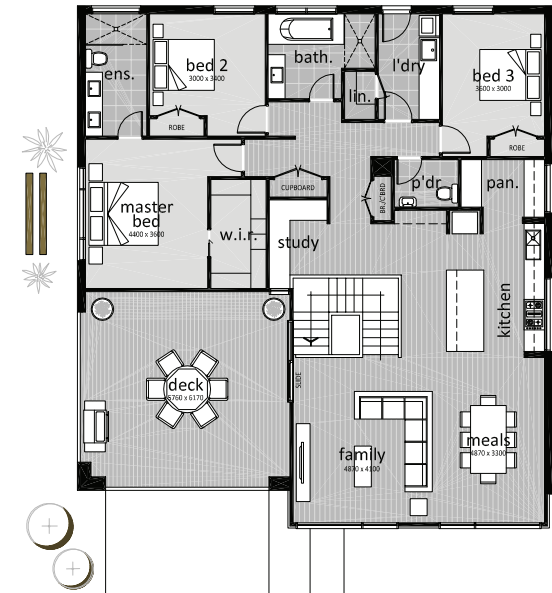
 4  
  2  
  2

lower floor	56.02m <sup>2</sup>	6.03 squares
upper floor	163.14m <sup>2</sup>	17.56 squares
garage	40.68m <sup>2</sup>	4.38 squares
total area	296.46m <sup>2</sup>	31.91 squares

home width	13.99 metres
home length	15.32 metres
min block depth	24 metres
min block width	16 metres



LOWER FLOOR



UPPER FLOOR



### Sales Enquiries

Sheridan Coulter  
 Sales & Design Consultant  
 Mobile 0417 036 366

### Main Office

Telephone (03) 5333 3881  
 mcmasterhomes.com.au  
 info@mcmasterhomes.com.au

This design is exclusively owned by McMaster Designer Homes Pty Ltd and cannot be reproduced or copied, either wholly, or in part, or in any form, without the written permission of McMaster Designer Homes Pty Ltd. McMaster Designer Home Pty Ltd reserves the right to change the floor plans without notice.