

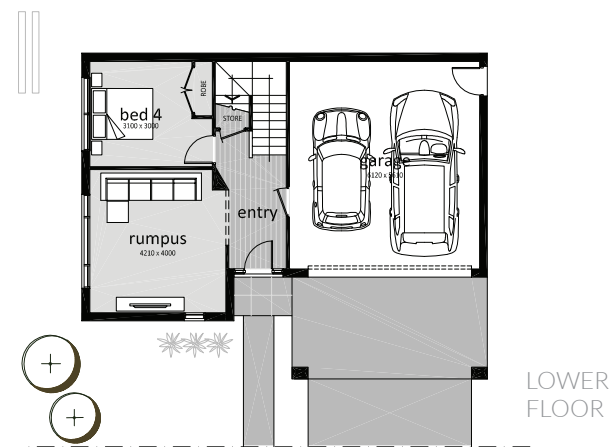


Strata 26 Up Slope / Top Living

 4
  2
  2

lower floor	46.04m ²	4.96 squares
upper floor	140.76m ²	15.15 squares
garage	38.42m ²	4.14 squares
total area	245.76m²	26.46 squares

home width	13.87 metres
home length	22.49 metres
min block depth	28 metres
min block width	15 metres



Sales Enquiries

Sheridan Coulter
 Sales & Design Consultant
 Mobile 0417 036 366

Main Office

Telephone (03) 5333 3881
 mcmasterhomes.com.au
 info@mcmasterhomes.com.au

This design is exclusively owned by McMaster Designer Homes Pty Ltd and cannot be reproduced or copied, either wholly, or in part, or in any form, without the written permission of McMaster Designer Homes Pty Ltd. McMaster Designer Home Pty Ltd reserves the right to change the floor plans without notice.