



MC40 Top Living

 4
  2
  2

ground floor	56.84m ²	6.12 squares
first floor	175.94m ²	18.94 squares
garage/ store	73.49m ²	7.91 squares
total area	374.65m ²	40.33 squares

home width	13.99 metres
home length	15.32 metres
carport	4.08 metres
alfresco	3.28 metres

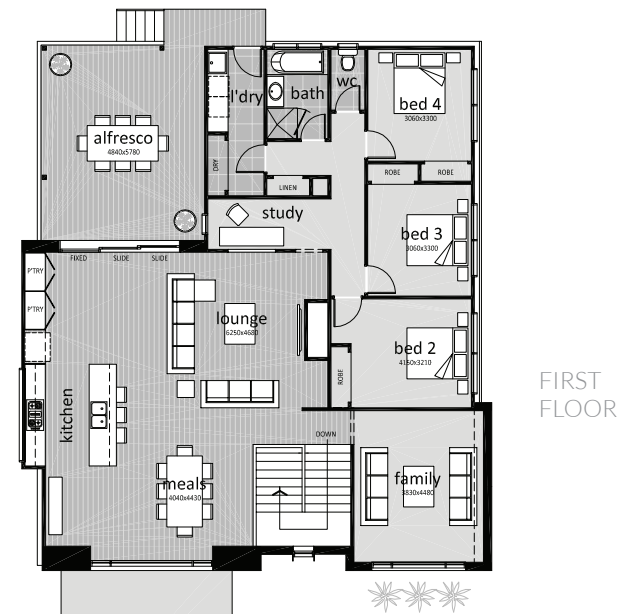
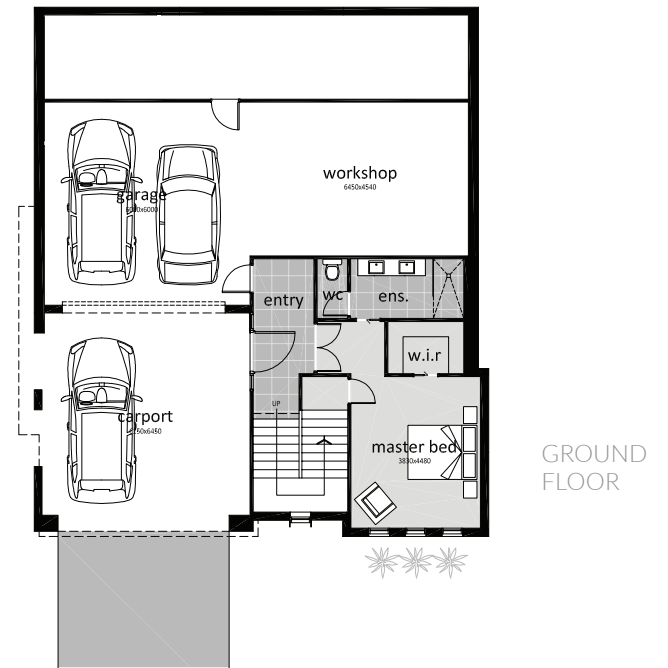


Sales Enquiries

Sheridan Coulter
 Sales & Design Consultant
 Mobile 0417 036 366

Main Office

Telephone (03) 5333 3881
 mcmasterhomes.com.au
 info@mcmasterhomes.com.au



This design is exclusively owned by McMaster Designer Homes Pty Ltd and cannot be reproduced or copied, either wholly, or in part, or in any form, without the written permission of McMaster Designer Homes Pty Ltd. McMaster Designer Home Pty Ltd reserves the right to change the floor plans without notice.