



MC33 Top Living

 4
  2
  2

ground floor	47.03m ²	5.06 squares
first floor	140.76m ²	15.15 squares
garage	30.62m ²	3.30 squares
total area	309.85m ²	33.35 squares

home width	11.94 metres
home length	14.96 metres
min block depth	21 metres
min block width	15 metres

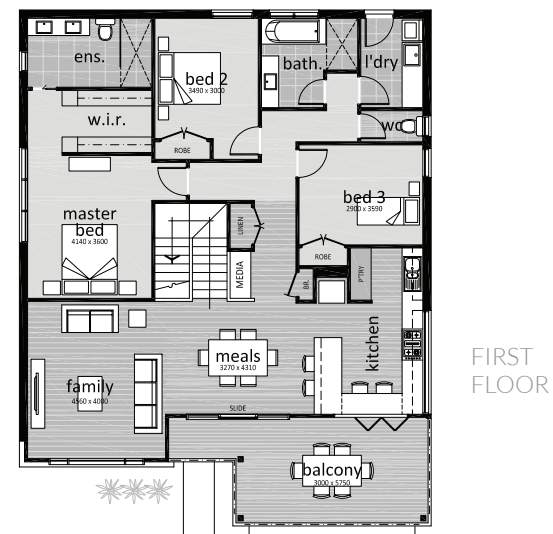
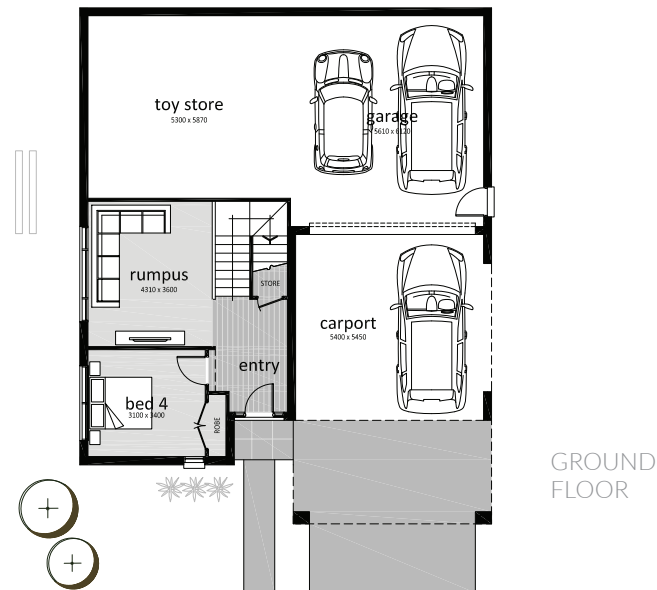


Sales Enquiries

Sheridan Coulter
 Sales & Design Consultant
 Mobile 0417 036 366

Main Office

Telephone (03) 5333 3881
 mcmasterhomes.com.au
 info@mcmasterhomes.com.au



This design is exclusively owned by McMaster Designer Homes Pty Ltd and cannot be reproduced or copied, either wholly, or in part, or in any form, without the written permission of McMaster Designer Homes Pty Ltd. McMaster Designer Home Pty Ltd reserves the right to change the floor plans without notice.